

 **RELIABLE**



3000IR

Professional Steam Iron

The 3000IR
Professional Steam Iron
Instruction Manual

Reliable. Getting it Right. For You.

At Reliable, we do what we love, and we take pride in doing it right. You want what's best for the people, places and things that matter in your life—from where you live to what you wear. So do we. That's why we approach every product with a laser-focus on you. In our commitment to quality, functionality, design and customer service, we are continuously innovating to find solutions to better fit your needs. Everything we make looks and feels just right, because it is. We get it right. For you.

For your safety and to fully enjoy the advantages of this product, please take a few minutes to read all the important safeguards and care instructions. Keep this manual handy and review the product warranty for your reference.

Thank you for your purchase. Please share your Reliable product experience by posting an online review on the website from which you purchased. We greatly appreciate it.

Important Safety Instructions – Save These Instructions in a Safe Place For Future Reference

Read all instructions before use.

1. Only use the iron for its intended use
2. Before starting the iron, be sure you have removed it from its box and all the packaging parts.
3. For the first use, vaporize for a few seconds over an old garment in order to eliminate any working remains.
4. This appliance is not intended for use by persons (including children) with reduced physical, sensory or mental capabilities, or lack of experience and knowledge, unless they have been given supervision or instruction concerning use of the appliance by a person responsible for their safety
5. Children should be supervised to ensure that they do not play with the appliance
6. Close supervision is required for any appliance used by or near children, Do not leave the iron unattended while the iron is connected or on an ironing board.
7. Do not dip the iron in water or other liquids, to avoid the risk of electric shock.
8. Do not pour water or other liquids on the iron, to avoid the risk of electric shock.
9. Do not touch the iron with wet hands or feet when it is connected.
10. Do not leave the iron on the ironing table, put it always on the provided iron rest.
11. The iron must not be left unattended while it is connected to the supply mains.
12. Lay the iron on the provided iron rest, or on the iron rest of the ironing machine.
13. The iron must be used and rested on a flat, stable surface.
14. When placing the iron on its stand, ensure that the surface on which the stand is placed is stable.
15. After using the iron, set the temperature knob to the minimum, turn off the general switches then pull out the electric plug.
16. The plug must be removed from the socket-outlet before the water reservoir is filled with water.
17. Wait for the iron to cool down before putting it aside.
18. The iron is not to be used if it has been dropped, if there are visible signs of damage or if it is leaking.
19. Do not operate the iron with a damaged cord or in the event the iron has been dropped or damaged. To avoid the risk of electric shock, do not disassemble the iron. Take it to a qualified serviceman for examination and repair. Incorrect assembly might result in a risk of electric shock when the iron is used after reassembly.
20. If the supply cord is damaged, it must be replaced by the manufacturer, its service agent or similarly qualified persons in order to avoid an hazard.

Features

- Thermostat with two integrated safety thermal fuses
- Snap-action thermostat with integrated thermofuse, operating at $298^{\circ}\text{C} \pm 10\text{K}$
- Separate thermofuse for added protection, operating at 298°C
- ETL listed for UL and CSA standards
- Ergonomic cork handle for extended comfort
- Requires connection to a steam source and lowboy electrical system



Specifications

Electrical 120V

Voltage 50-60 Hz

Wattage 800W

Cord Length 7'

Important: First Use Notice

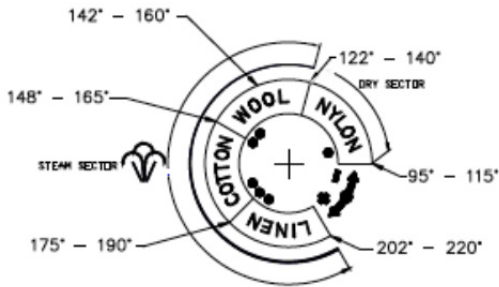
When using your iron for the first time, you may notice a small amount of vapor or odor — this is completely normal. It's caused by the heating element "burning in."

To clear it, run steam through the unit for 20-30 seconds.

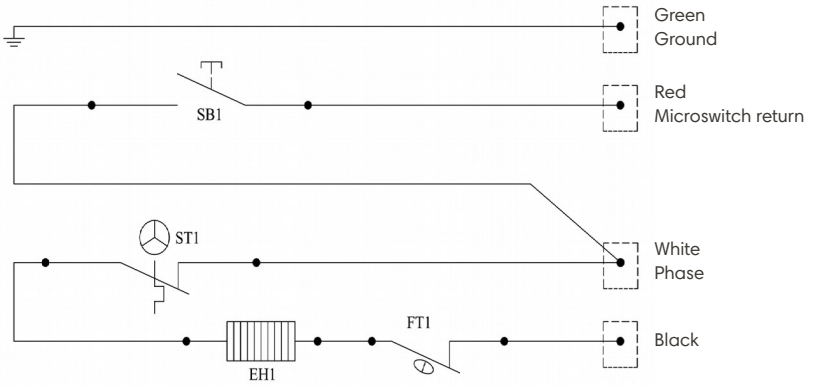
After this initial steam cycle, you may notice a small amount of residue on the soleplate.

How to Assemble and Use

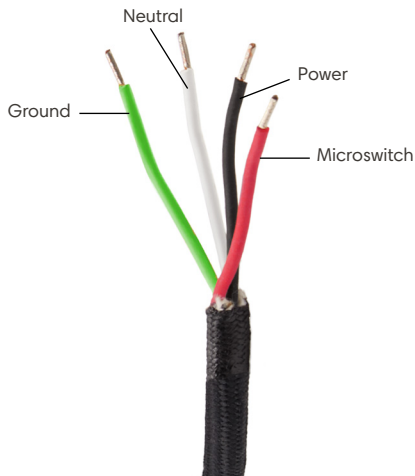
1. Remove the steam iron from its packing and make sure all packing parts have been taken off (including the protective bags).
2. It is recommended to put the iron on the iron pad, (supplied) as the pad will withstand the temperature of the iron
3. Connect the iron to your electrical source as needed. Please consult the wiring diagram on Page 7.
4. Set the temperature regulation knob to desired temperature.
5. Wait for the iron plate to get hot (it takes about 5 minutes).
6. The steam iron is now ready for use.
7. Please wait 30 minutes for the steam iron to cool down before storing it away.



Wiring



SB1	Steam Button
FT1	Thermofuse
EH1	Heating Element
ST1	Integrated Thermostat with Thermofuse



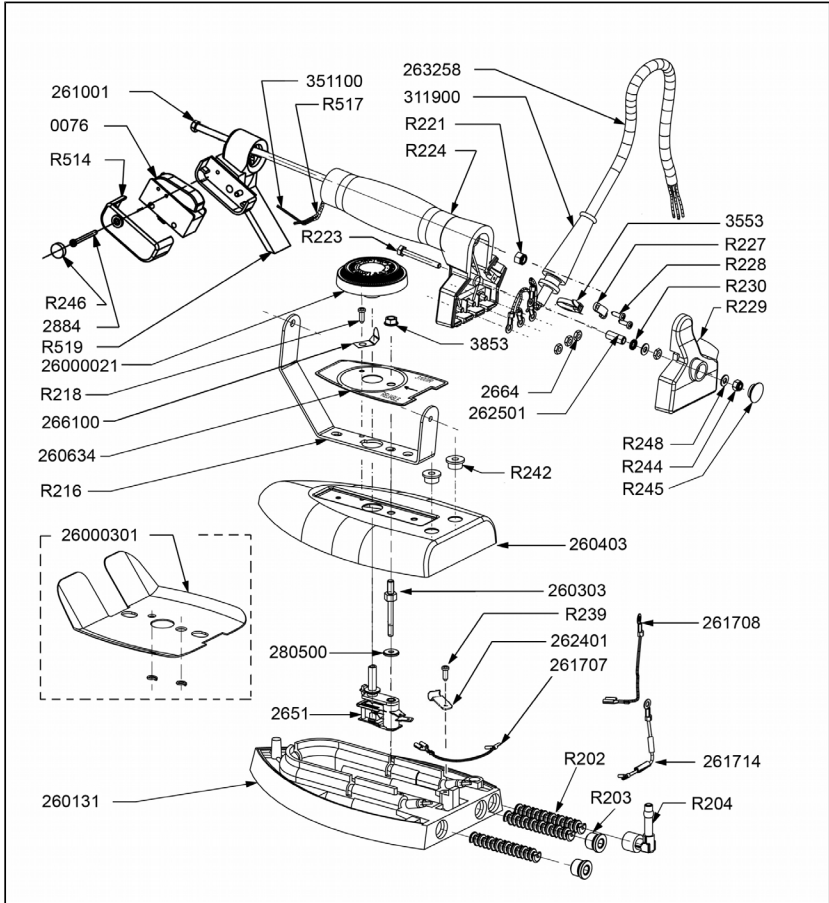
Description of the Iron



Disposal After End of Useful Life

When you want to dispose of the appliance, NEVER throw it in the garbage. Instead, go to your closest recycling station or waste collection centre for subsequent treatment. In this way, you will be contributing to looking after the environment.

Parts Drawing



Parts List

Cod.	Description
0076	<i>Microswitch</i>
26000021	<i>Control knob</i>
26000301	<i>Heat shield with washers</i>
260131	<i>Soleplate 120V 800W with rear steam outlet</i>
260303	<i>Spacer</i>
260403	<i>Iron cover for rear steam outlet</i>
260634	<i>Nameplate</i>
261001	<i>Tie rod</i>
261707	<i>Electric wire</i>
261708	<i>Electric wire</i>
261714	<i>Electric wire with thermofuse</i>
262401	<i>Metal spring for thermofuse fixing</i>
262501	<i>Spacer</i>
263258	<i>Power cord</i>
2651	<i>Thermostat w/integrated termofuse</i>
2664	<i>Nut</i>
266100	<i>Control knob metal spring</i>
280500	<i>Washer</i>
2884	<i>Screw</i>
311900	<i>Fairlead for power cord</i>
351100	<i>Microswitch wire</i>
3553	<i>Plastic tie</i>
3853	<i>Nut</i>
R202	<i>Filter</i>
R203	<i>Filter cap</i>
R204	<i>Steam fitting for rear outlet</i>
R216	<i>Handle support</i>
R218	<i>Screw</i>
R221	<i>Nut</i>
R223	<i>Screw</i>
R224	<i>Cork handle</i>
R227	<i>Clamp</i>
R228	<i>Screw</i>
R229	<i>Rear cover</i>
R230	<i>Washer</i>
R239	<i>Screw</i>
R242	<i>Bushing</i>
R244	<i>Nut</i>
R245	<i>Rear cover cap</i>
R246	<i>Microswitch screw cap</i>
R248	<i>Washer</i>
R514	<i>Microswitch cover</i>
R517	<i>Sheating</i>
R519	<i>Front end</i>

Limited 1 year warranty

Reliable Corporation (“Reliable”) warrants to original purchaser of its products that every product sold by Reliable (a “Reliable Product”) is free from defects in material and workmanship for a period of one year from the date of purchase if properly used and maintained. Subject to the conditions and limitations set forth below, Reliable will either repair or replace any part of a Reliable Product that proves defective by reason of improper workmanship or materials. If the defective Reliable Product is no longer available and cannot be repaired effectively or replaced with an identical model, Reliable shall replace the defective Reliable Product with a current Reliable Product of equal or greater value. Repaired parts or replacement products will be provided by Reliable on an exchange basis, and will be either new or refurbished to be functionally equivalent to new. If Reliable is unable to repair or replace a Reliable Product, it will refund the current value of that Reliable Product at the time the warranty claim is made.

This limited warranty does not cover any damage to a Reliable Product that results from improper installation, accident, abuse, misuse, natural disaster, insufficient or excessive electrical supply, abnormal mechanical or environmental conditions, wear and tear resulting from normal use of the product, or any unauthorized disassembly, repair, or modification. This limited warranty does not extend to any indirect, consequential or incidental damages that may be suffered by a user or from the use of a Reliable Product, including without limitation, any liability for third party claims for damage, and is limited to the amount paid by the original purchaser Reliable Product with respect to which this limited warranty protection applies. This limited warranty does not apply with respect to products that have been altered or which are missing serial numbers or for products not purchased directly from Reliable or a dealer authorized by us to sell Reliable Products.

This limited warranty is the only warranty that applies to any Reliable Product, supersedes any and all terms that may be contained in any other document or purchase order and may not be altered or amended except expressly in writing by Reliable.

To obtain a repair or replacement under the terms of this warranty, please contact our customer service group at 1-800-268-1649 or at support@reliablecorporation.com.

You will be required to submit an original receipt via e-mail. The receipt must reflect that you are the original purchaser, the product was bought directly from us or from an authorized Reliable dealer and that the warranty claim is being made within the warranty period. You will be issued a return authorization number (RA#) and asked to ship the defective product together with proof of purchase and RA#, prepaid insured to the following address:

Reliable Corporation, 5-100 Wingold Avenue, Toronto, ON M6B 4K7. Freight collect shipments will be refused. The risk of loss or damage in transit will be borne by the customer. Once Reliable receives the defective product, it will initiate the repair or replacement process.

If you have any questions regarding this warranty, you may write to:

Reliable Corporation
100 Wingold Avenue, Unit 5
Toronto, Ontario
Canada M6B 4K7
www.reliablecorporation.com



1 800 268 1649
www.reliablecorporation.com

30042025