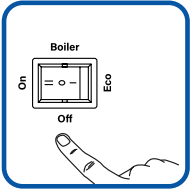


5100BU Maintenance Schedule

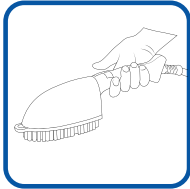
AT THE END OF THE DAY:

Release Steam Pressure

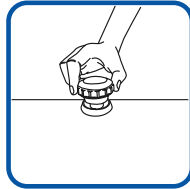
To prolong the life of the boiler and its components, we recommend that this task be performed at the end of the day.



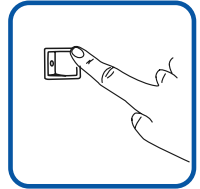
Turn off the boiler switch.



Press the steam button on the steam brush/wand/fabric finisher's handle until the pressure drops to zero.



Open the filler safety cap slightly to allow the remaining steam to release.

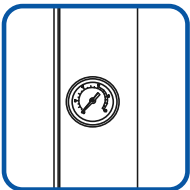


To complete the shutdown of the unit, turn the steam switch off.

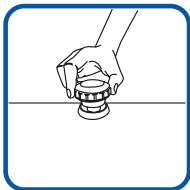
EVERY WEEK:

Flush the Boiler Unit

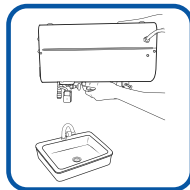
To prevent limescale deposits, the boiler should be drained every week.



Should be completed in the morning or when the boiler is cold with zero pressure.



The safety cap should be open. If it is not, please remove the cap completely.



Turn the unit upside down to drain all the water in the tank. Add clean water and repeat if necessary to remove any sediment.