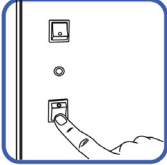


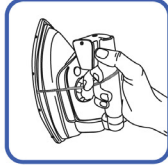
**At End of Day:**

**Releasing Steam Pressure**

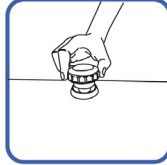
To prolong the life of the boiler and its components, we recommend that this task be performed at the end of the day.



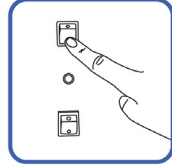
1. Turn off the boiler switch.



2. Press the steam button on the iron handle until the pressure drops to zero.



3. Open the filler safety cap slightly to allow the remaining steam to release.



4. To complete the shutdown of the boiler, turn the steam switch off.

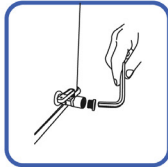
**Every Week:**

**Flushing the Boiler Out**

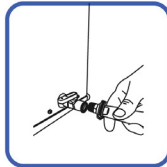
To prevent limescale deposits, the boiler should be drained every week.



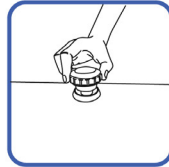
1. Should be completed in the morning or when the boiler is cold with zero pressure.



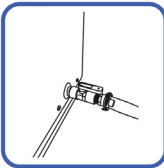
2. Remove the plug (using an 8mm allen key) from the drain valve.



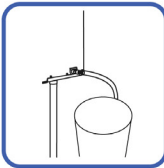
3. Attach the supplied clear drain hose to the drain valve.



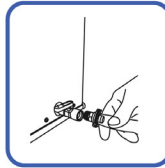
4. The safety cap should be open. If it's not, please remove the cap completely.



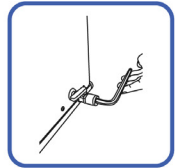
5. Open the drain valve and allow the water to be emptied into a large container.



6. When completely emptied, close the drain valve.



7. Remove the hose and reattach the plug at the end of the drain valve.

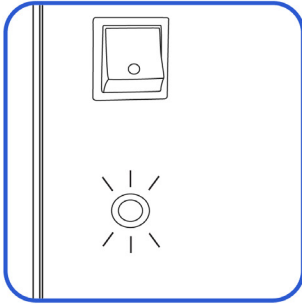


8. The unit is now ready to be filled with water.

**Daily Use:**

**Refilling Your Boiler**

Use tap water or 50/50 tap/distilled water in the appliance. Do not use perfumed or products containing alcohol in the appliance.



Low Water Indicator

**Tip:**

Filling your tank before the low water indicator light flashes will prolong the life of your boiler.

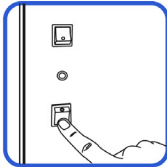
Example: If your boiler runs out of water everyday at 2pm, ensure you refill at noon everyday.

**Caution:**

Prolonged periods of time with no water or low water can be harmful to the boiler or element.

**Resetting Your Boiler**

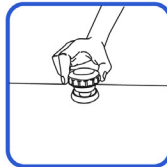
If the water light is on too long, the safety thermostat reset will engage. If it engages, follow these instructions:



1. Turn off the boiler switch.



2. To ensure your safety, press the steam button until the pressure drops to zero.



3. Open the filler safety cap slightly to allow the remaining steam to release, fill with water, and return cap without over tightening.



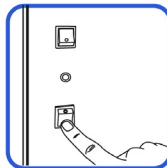
4. Unscrew the reset button cover.



5. Press the reset button.



6. Screw on the reset button cover.



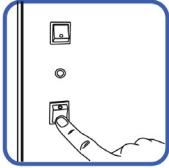
7. Turn on the boiler switch.

Reliable Support & Service  
1-800-268-1649  
support@reliablecorporation.com

**At End of Day:**

**Releasing Steam Pressure**

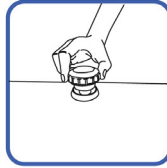
To prolong the life of the boiler and its components, we recommend that this task be performed at the end of the day.



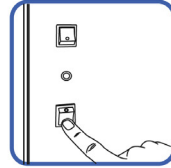
1. Turn off the boiler switch.



2. Press the steam button on the steam gun until the pressure drops to zero.



3. Open the filler safety cap slightly to allow the remaining steam to release.



4. To complete the shutdown of the boiler, turn the steam switch off.

**Every Week:**

**Flushing the Boiler Out**

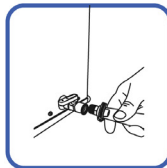
To prevent limescale deposits, the boiler should be drained every week.



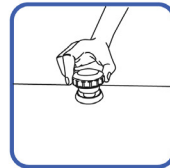
1. Should be completed in the morning or when the boiler is cold with zero pressure.



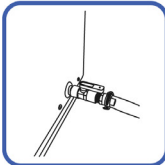
2. Remove the plug (using an 8mm allen key) from the drain valve.



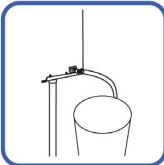
3. Attach the supplied clear drain hose to the drain valve.



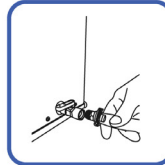
4. The safety cap should be open. If it's not, please remove the cap completely.



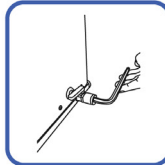
5. Open the drain valve and allow the water to be emptied into a large container.



6. When completely emptied, close the drain valve.



7. Remove the hose and reattach the plug at the end of the drain valve.

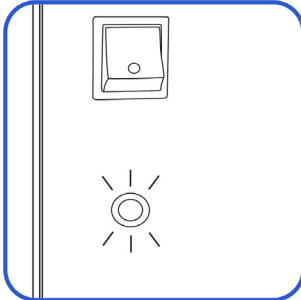


8. The unit is now ready to be filled with water.

**Daily Use:**

**Refilling Your Boiler**

Use tap water or 50/50 tap/distilled water in the appliance. Do not use perfumed or products containing alcohol in the appliance.



Low Water Indicator

**Tip:**

Filling your tank before the low water indicator light flashes will prolong the life of your boiler.

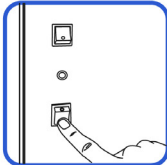
Example: If your boiler runs out of water everyday at 2pm, ensure you refill at noon everyday.

**Caution:**

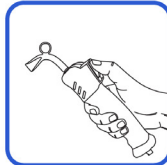
Prolonged periods of time with no water or low water can be harmful to the boiler or element.

**Resetting Your Boiler**

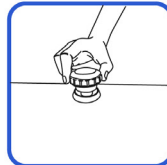
If the water light is on too long, the safety thermostat reset will engage. If it engages, follow these instructions:



1. Turn off the boiler switch.



2. To ensure your safety, press the steam button until the pressure drops to zero.



3. Open the filler safety cap slightly to allow the remaining steam to release, fill with water, and return cap without over tightening.



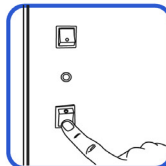
4. Unscrew the reset button cover.



5. Press the reset button.



6. Screw on the reset button cover.



7. Turn on the boiler switch.

Reliable Support & Service  
1-800-268-1649  
support@reliablecorporation.com

**At End of Day:**

**Releasing Steam Pressure**

To prolong the life of the boiler and its components, we recommend that this task be performed at the end of the day.

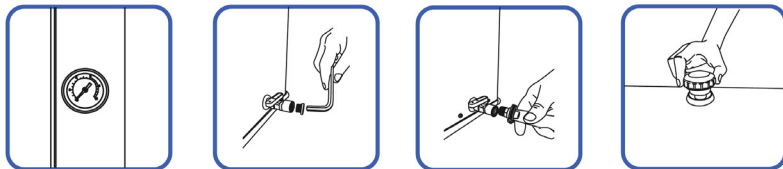


1. Turn off the boiler switch.
2. Press the pedal until the pressure drops to zero.
3. Open the filler safety cap slightly to allow the remaining steam to release.
4. To complete the shutdown of the boiler, turn the steam switch off.

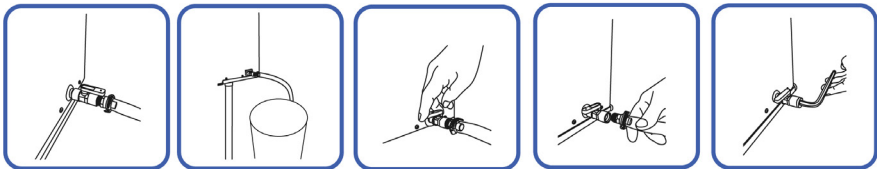
**Every Week:**

**Flushing the Boiler Out**

To prevent limescale deposits, the boiler should be drained every week.



1. Should be completed in the morning or when the boiler is cold with zero pressure.
2. Remove the plug (using an 8mm allen key) from the drain valve.
3. Attach the supplied clear drain hose to the drain valve.
4. The safety cap should be open. If it's not, please remove the cap completely.



5. Open the drain valve and allow the water to be emptied into a large container.
6. When completely emptied, close the drain valve.
7. Remove the hose and reattach the plug at the end of the drain valve.

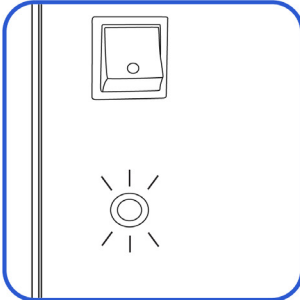
8. The unit is now ready to be filled with water.

Reliable Support & Service  
1-800-268-1649  
support@reliablecorporation.com

**Daily Use:**

**Refilling Your Boiler**

Use tap water or 50/50 tap/distilled water in the appliance. Do not use perfumed or products containing alcohol in the appliance.



Low Water Indicator

**Tip:**

Filling your tank before the low water indicator light flashes will prolong the life of your boiler.

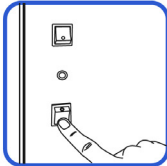
Example: If your boiler runs out of water everyday at 2pm, ensure you refill at noon everyday.

**Caution:**

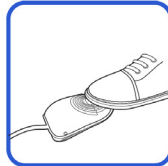
Prolonged periods of time with no water or low water can be harmful to the boiler or element.

**Resetting Your Boiler**

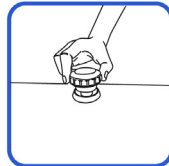
If the water light is on too long, the safety thermostat reset will engage. If it engages, follow these instructions:



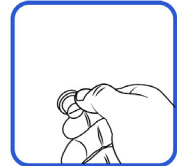
1. Turn off the boiler switch.



2. To ensure your safety, press the steam button until the pressure drops to zero.



3. Open the filler safety cap slightly to allow the remaining steam to release, fill with water, and return cap without over tightening.



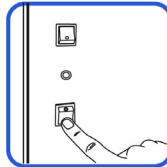
4. Unscrew the reset button cover.



5. Press the reset button.



6. Screw on the reset button cover.



7. Turn on the boiler switch.

Reliable Support & Service  
1-800-268-1649  
support@reliablecorporation.com