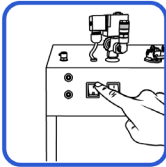


At End of Day:**Releasing Steam Pressure**

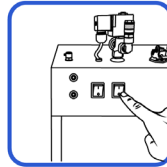
To prolong the life of the boiler and its components, we recommend that this task be performed at the end of the day.



1. Turn off the boiler switch.



2. Press the steam button on the iron until the pressure drops to zero.



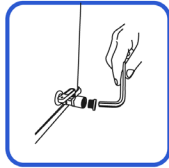
3. To complete the shutdown of the boiler, turn the steam switch off.

Every Week:**Flushing the Boiler Out**

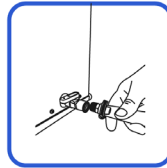
To prevent limescale deposits, the boiler should be drained every week.



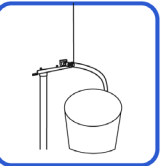
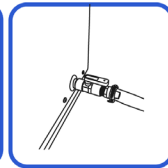
1. Should be completed in the morning or when the boiler is cold with zero pressure.



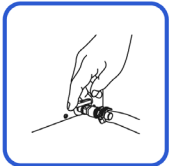
2. Remove the plug (using an 8mm allen key) from the drain valve.



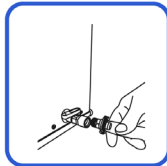
3. Attach the supplied clear drain hose to the drain valve.



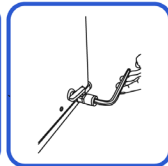
4. Open the drain valve and allow the water to be emptied into a large container.



5. When completely emptied, close the drain valve.



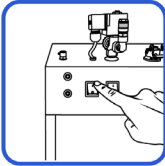
6. Remove the hose and reattach the plug at the end of the drain valve.



7. The unit is now ready to be filled with water.

At End of Day:**Releasing Steam Pressure**

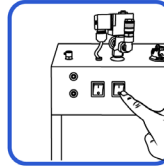
To prolong the life of the boiler and its components, we recommend that this task be performed at the end of the day.



1. Turn off the boiler switch.



2. Press the steam button on the steam gun until the pressure drops to zero.



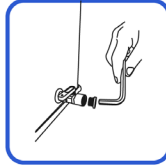
3. To complete the shutdown of the boiler, turn the steam switch off.

Every Week:**Flushing the Boiler Out**

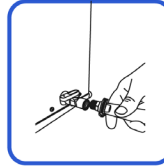
To prevent limescale deposits, the boiler should be drained every week.



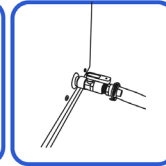
1. Should be completed in the morning or when the boiler is cold with zero pressure.



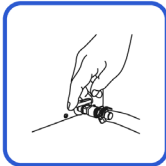
2. Remove the plug (using an 8mm allen key) from the drain valve.



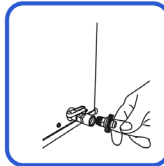
3. Attach the supplied clear drain hose to the drain valve.



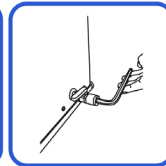
4. Open the drain valve and allow the water to be emptied into a large container.



5. When completely emptied, close the drain valve.



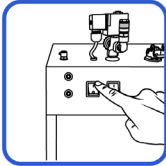
6. Remove the hose and reattach the plug at the end of the drain valve.



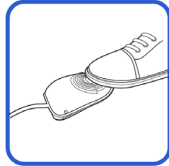
7. The unit is now ready to be filled with water.

At End of Day:**Releasing Steam Pressure**

To prolong the life of the boiler and its components, we recommend that this task be performed at the end of the day.



1. Turn off the boiler switch.



2. Press the pedal until the pressure drops to zero.



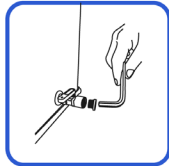
3. To complete the shutdown of the boiler, turn the steam switch off.

Every Week:**Flushing the Boiler Out**

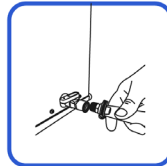
To prevent limescale deposits, the boiler should be drained every week.



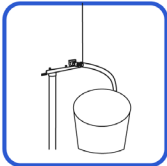
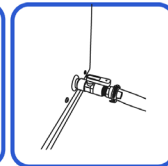
1. Should be completed in the morning or when the boiler is cold with zero pressure.



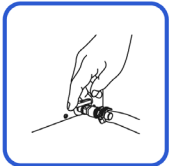
2. Remove the plug (using an 8mm allen key) from the drain valve.



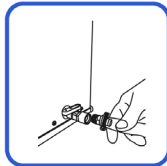
3. Attach the supplied clear drain hose to the drain valve.



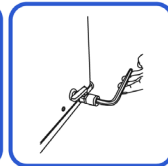
4. Open the drain valve and allow the water to be emptied into a large container.



5. When completely emptied, close the drain valve.



6. Remove the hose and reattach the plug at the end of the drain valve.



7. The unit is now ready to be filled with water.